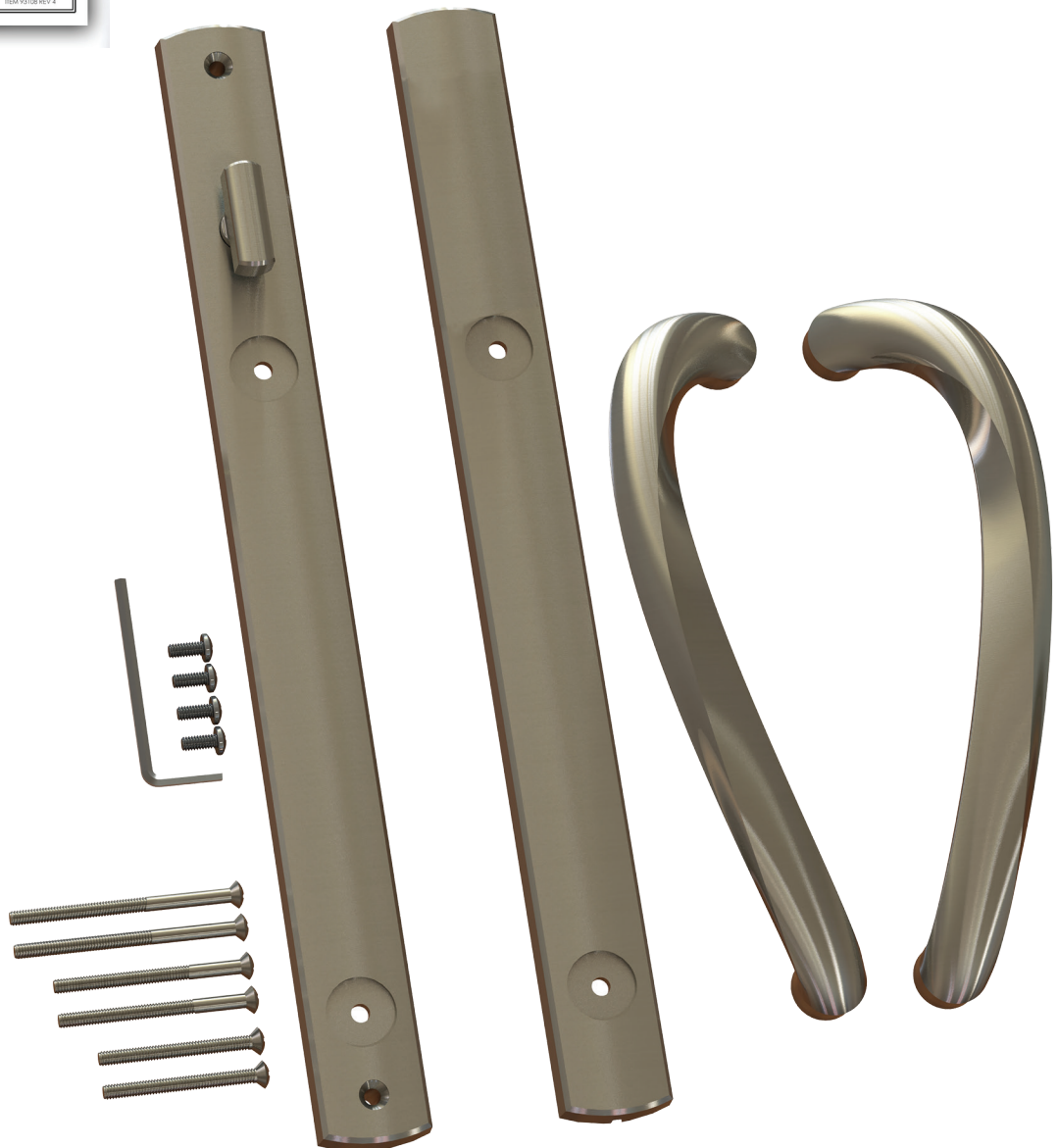


## 40.94.xx.100 SEMI-ACTIVE HANDLE KIT

Included in the 40.94.xx.100 Semi-Active handle kit:

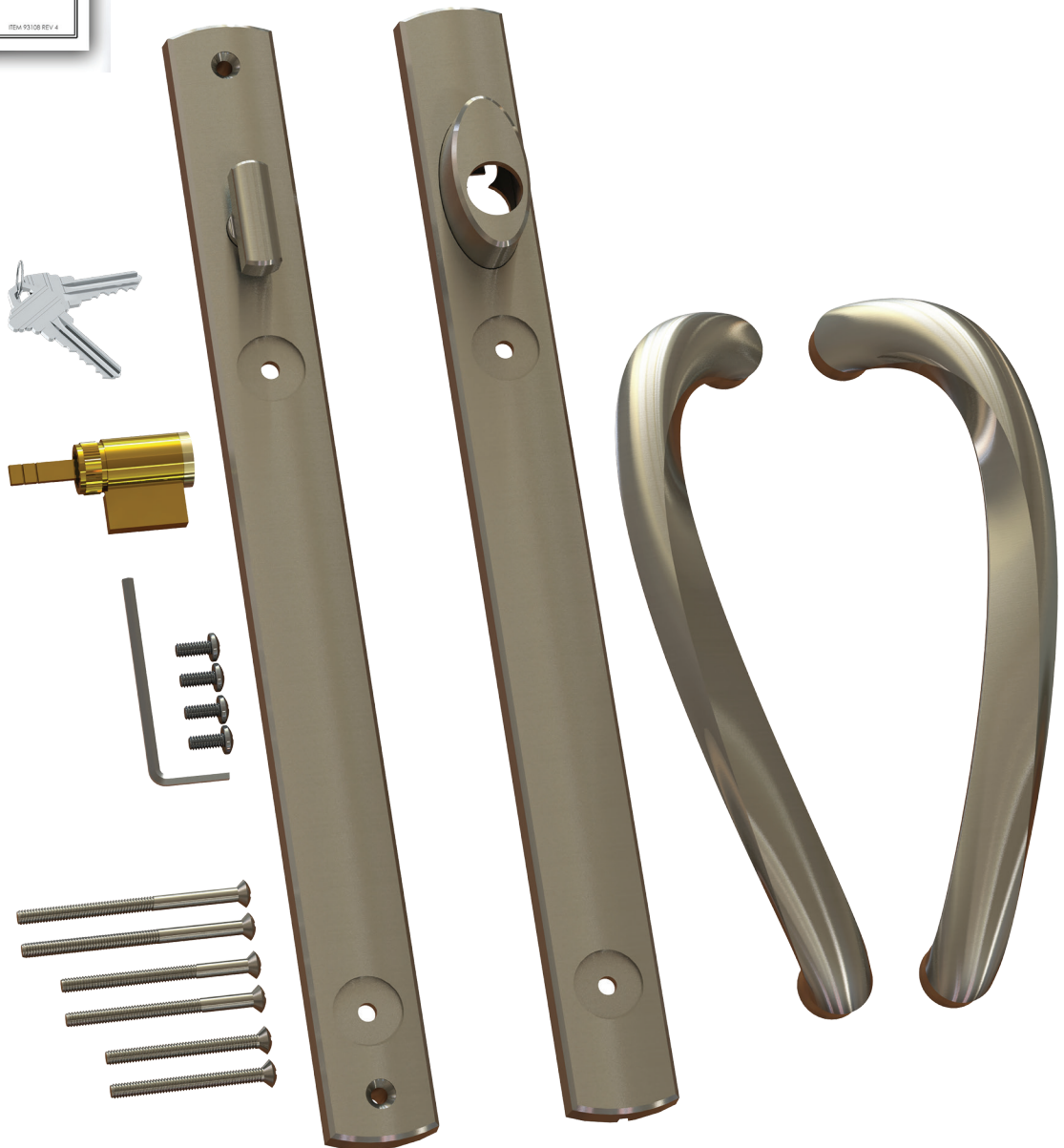
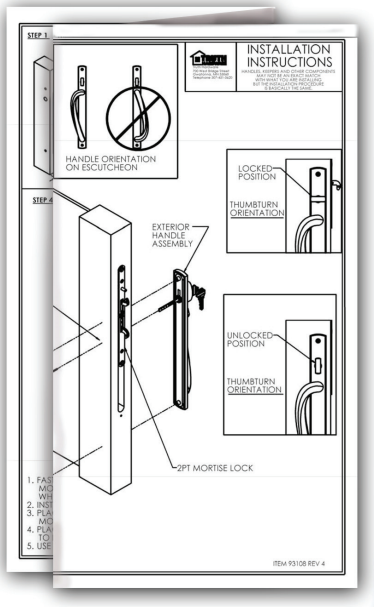
- Both OX and XO handles.
- Interior escutcheon with thumbturn mounted.
- Exterior escutcheon with full length gasket.
- Handle (4) mounting screws with hex wrench.
- 3 sets of door mounting screws of 1 3/4", 2 1/8", 2 1/2" lengths to fit stile thicknesses ranging from 1.25" to 2.25".
- Assembly instruction sheet.

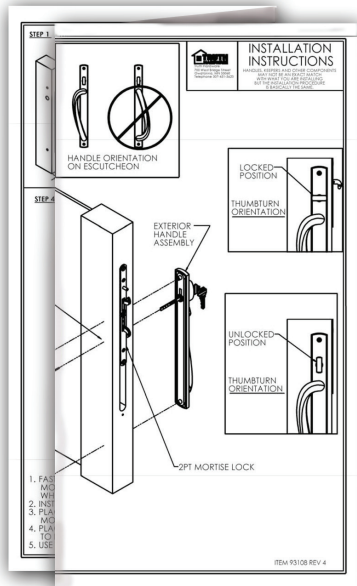


## 40.94.xx.101 ACTIVE HANDLE KIT

Included in the 40.94.xx.101 Active handle kit:

- Both OX and XO handles.
- Interior escutcheon with thumbturn mounted.
- Exterior escutcheon with full length gasket.
- Handle (4) mounting screws with hex wrench.
- 3 sets of door mounting screws of 1 3/4", 2 1/8", 2 1/2" lengths to fit stile thicknesses ranging from 1.25" to 2.25".
- KD SCH-C style 5-pin Key cylinder. (KA available separately)
- 2 keys
- Assembly instruction sheet.





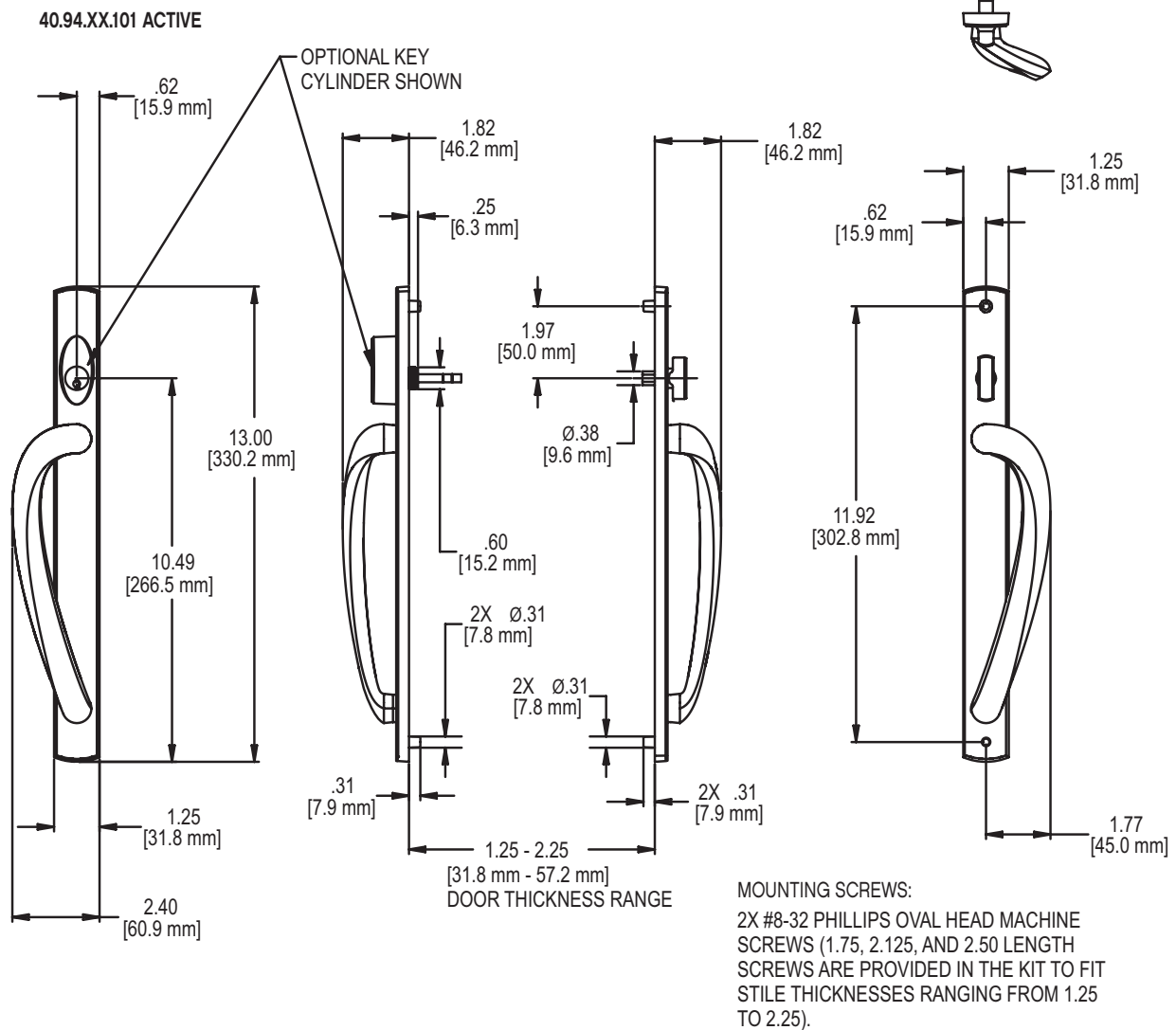
## 40.94.xx.102 INACTIVE HANDLE KIT

Included in the 40.94.xx.102 Inactive handle kit:

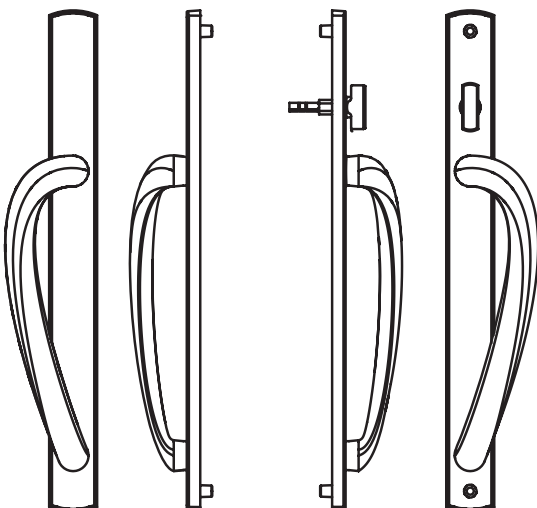
- Both OX and XO handles.
- Interior escutcheon.
- Exterior escutcheon with full length gasket.
- Handle (4) mounting screws with hex wrench.
- 3 sets of door mounting screws of 1 3/4", 2 1/8", 2 1/2" lengths to fit stile thicknesses ranging from 1.25" to 2.25".
- Assembly instruction sheet.



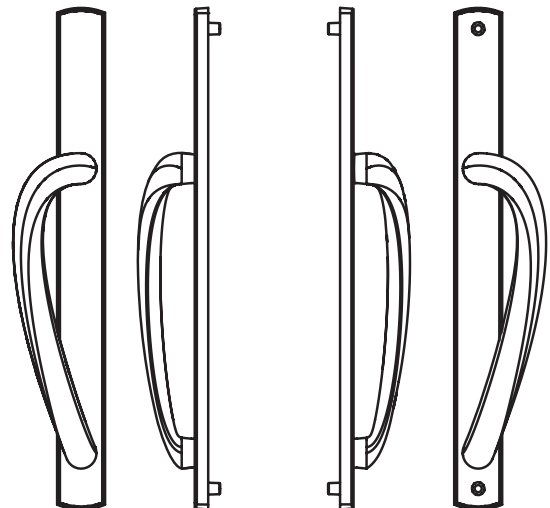
## SIGNATURE SERIES PATIO DOOR HANDLE 40.94



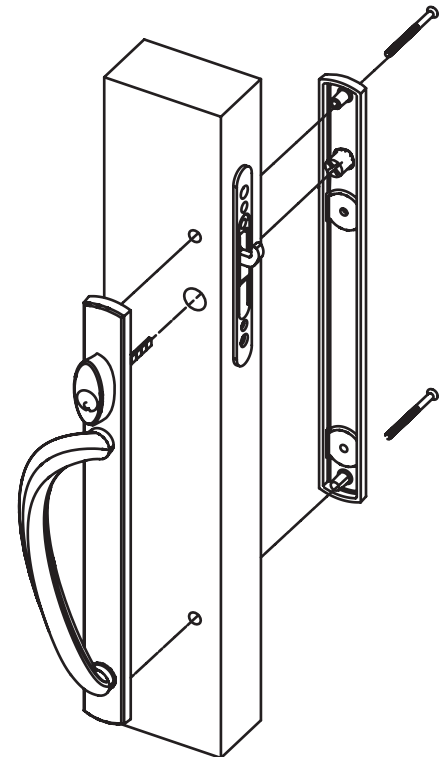
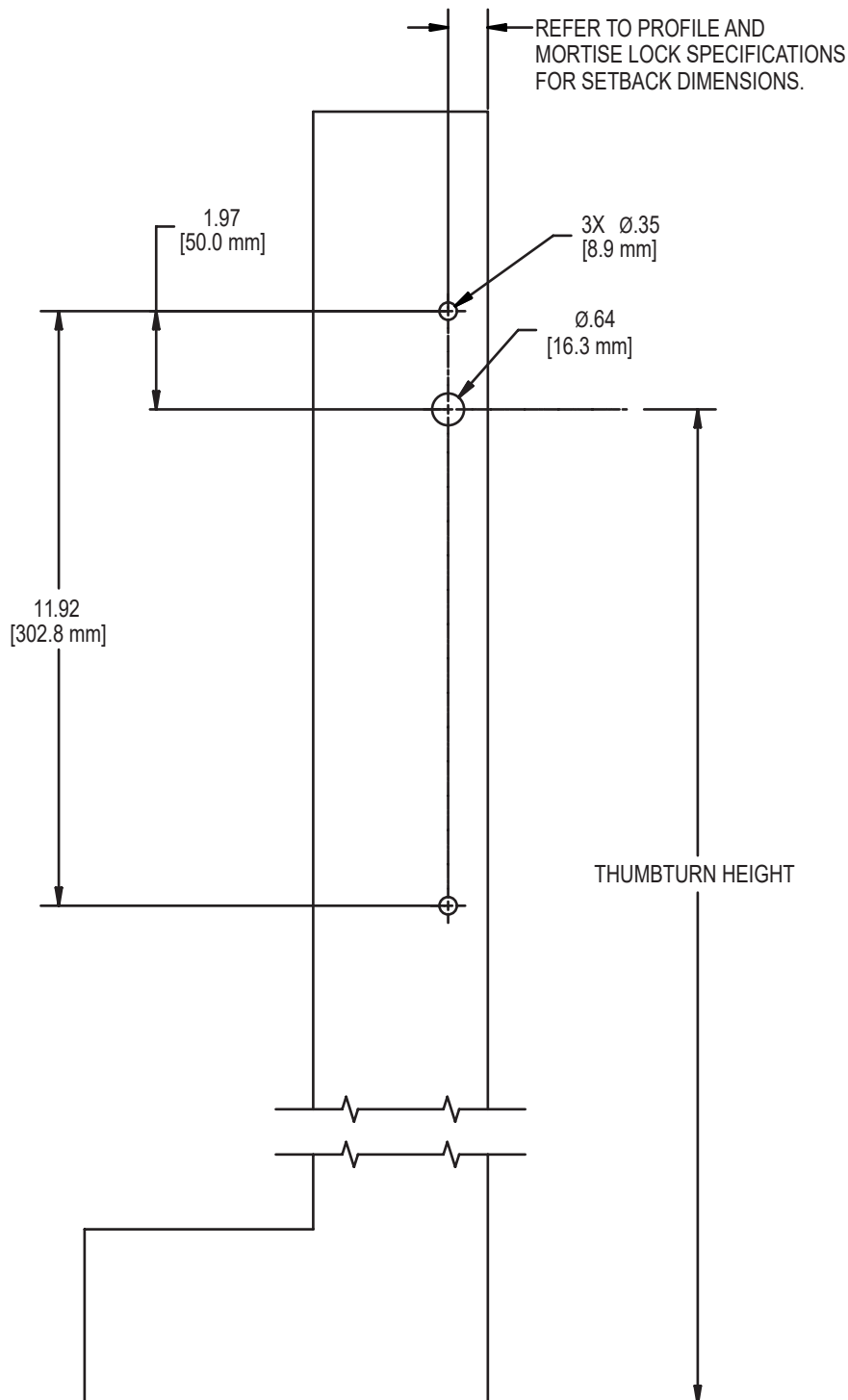
**40.94.XX.100 SEMI-ACTIVE**



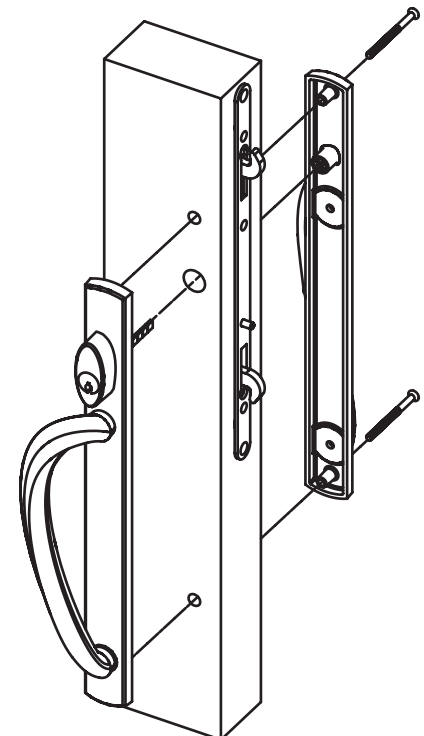
**40.94.XX.102 INACTIVE**



## SIGNATURE SERIES THUMBTURN STYLE DOOR HANDLES APPLICATION (STANDARD APPLICATION)

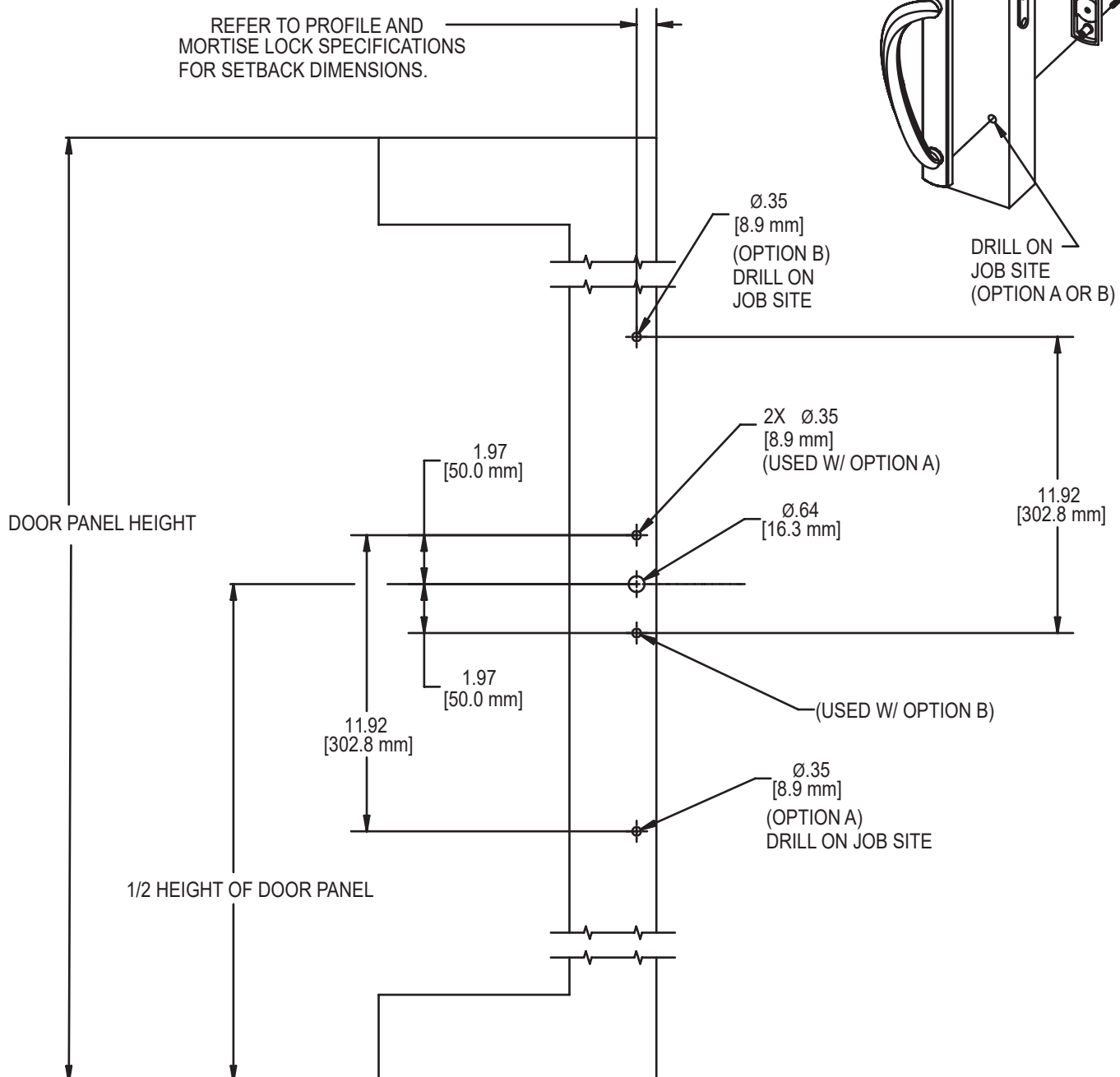


SINGLE POINT  
MORTISE LOCK



GEMINI 2  
MORTISE LOCK

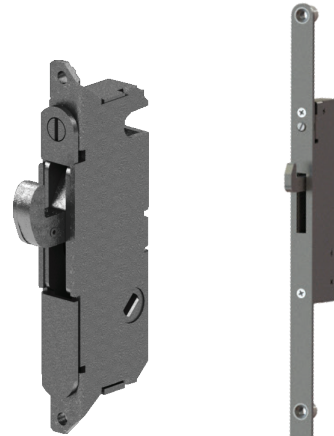
## SIGNATURE SERIES THUMBTURN STYLE DOOR HANDLES APPLICATION (CARTWHEEL APPLICATION)



## Compatible Locks:

The Signature Series 40.90 handle sets work with single point, 2 point, and 3 point locks. AmesburyTruth's technical applications specialists can help assist with determining the best lock for the door system you are fabricating.

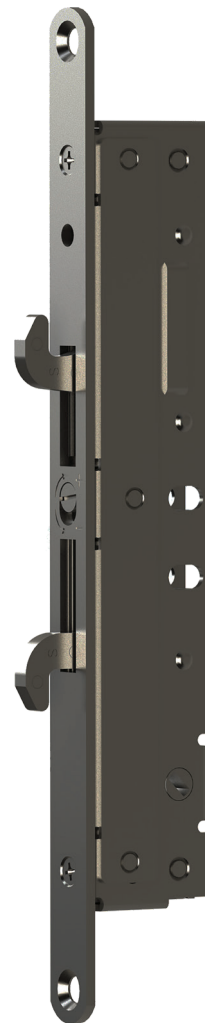
The applications team can be reached at:  
[ApplicationSpecialists@truth.com](mailto:ApplicationSpecialists@truth.com)



**Single Point**



**Gemini  
2 - Point**



**Nexus  
2 - Point**



**Nexus  
3 - Point**